

We develop 3D

We develop efficient yet robust 3D/CAD/CAM software for 3D geometry processing, 3D data analysis and modelling. With a strong background in geometry and mathematics we create unique solutions for dental technology and dentistry.



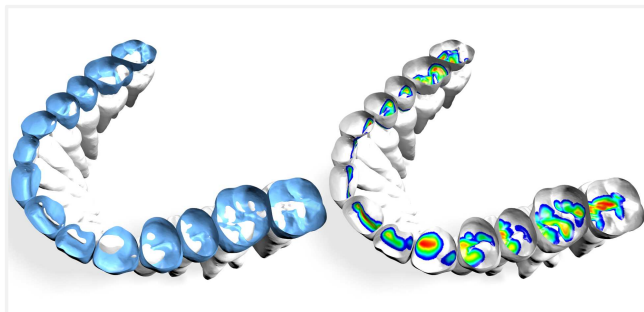
Our service portfolio

- Individual development of tailor-made stand-alone software
- Development of sophisticated, ready for use software modules for integration into existing applications
- Comprehensive portfolio of reliable algorithms as a result of decades of experience

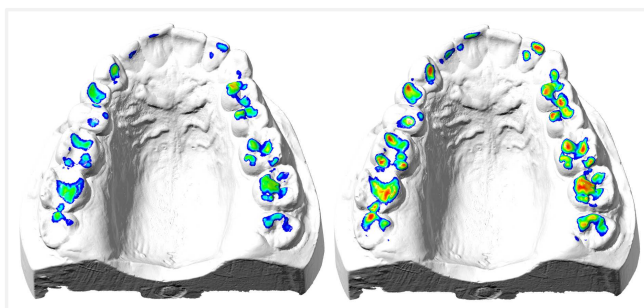
Our core competencies

- Matching and SLAM
- Robust, efficient processing of point clouds and meshes
- Feature detection on 3D models
- Automated, parametric modelling
- Virtual functional analysis

Fine alignment of digital jaws with **intercusp**



Initial alignment with intersections (left). Intersection-free alignment with **intercusp** without 3rd scan (right).



Initial jaws not in occlusion (left). Intersection-free alignment with **intercusp** without 3rd scan (right).

What is **intercusp**?

- Ready for use DLL software module
- Algorithm lets jaws glide automatically into each other so that they touch but do not intersect
- Result is intersection-free maximum intercuspation
- Easy integration into existing software - user interface stays familiar
- Processing of various geometric representations (meshes, point clouds, etc.)
- For desktop and intraoral scanners

Your benefits

- No 3rd scan necessary
- Faster workflow, more precise results
- Algorithm provides for accuracy and reliability
- Ready for use plug-and-play solution

Your advantages

- High performance and efficiency
- Platform independent (Windows, Mac, Linux)
- Individually adapted API
- Reliable support, regular updates

