

Tailored Dental 3D Software Modules

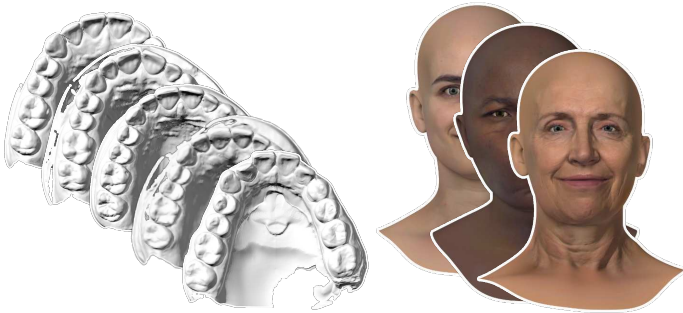
Fast-track your software development with our industry-proven and easy-to-integrate

- 3D SDKs,
- software libraries,
- plugins

for dentistry and dental technology.



3D Scanning in Real-Time



Create high-precision 3D models from depth images in real-time, with our state-of-the-art

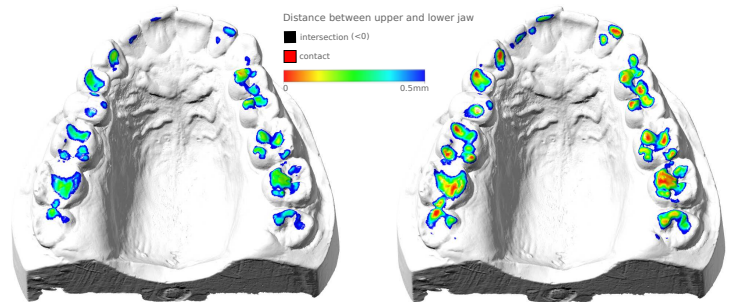
- SLAM,
- matching,
- meshing,
- stitching

SDKs for intraoral scanners, lab scanners and face scanners.

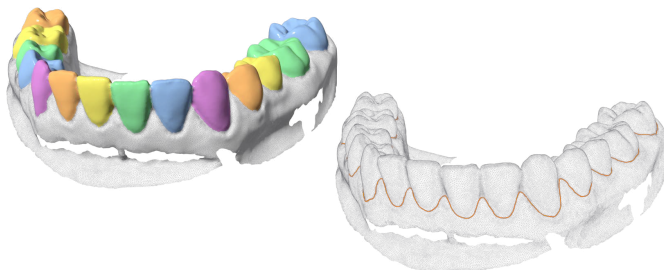
Jaw and Face Scan Matching

Orient jaws accurately in an

- intersection-free maximal contact;
 - and create stunning
 - 3D preview animations
- of morphing jaws and moving faces.



Automated Dental 3D Workflows



Accelerate your workflows with our automatic 3D tools for

- jaw orientation,
- gumline detection,
- tooth segmentation,

ready-to-use and tailored to your needs.